



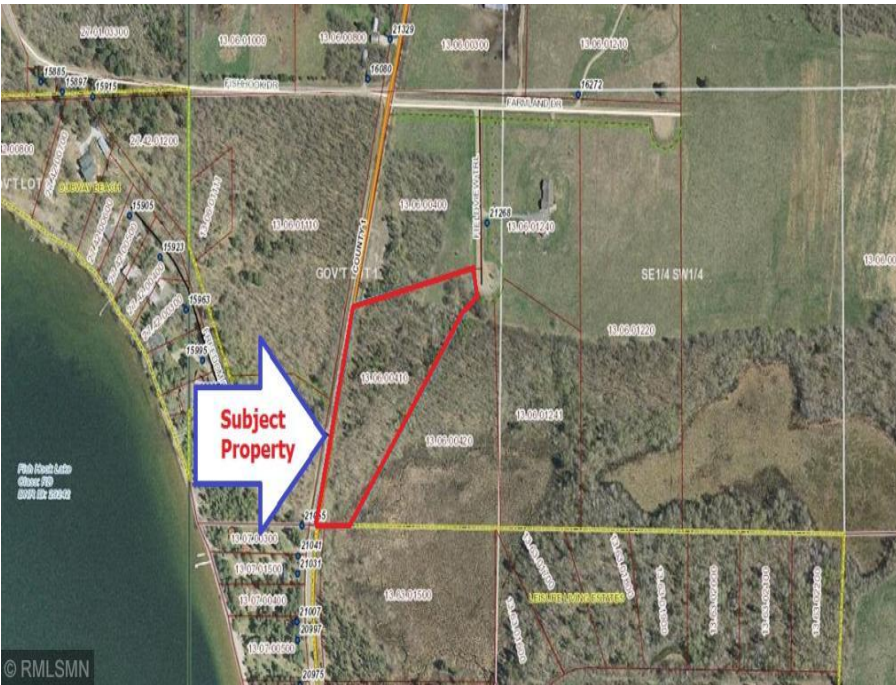
MLS 5134355 Land

**\$29,900**

5.20 acres  
Raw Land

0 Fieldview Trail  
Park Rapids MN 56470

(Active)



**Description:**

Great lot just outside of town, new development area, country living on 5+ AC with ease of town nearby. Golfing and Heartland Trail for recreation enjoyment.

**Additional Details:**

Lot Acres	5.200
Topography	Level
Development Status	Raw Land
School District	309 - Park Rapids
Taxes	\$170
Taxes with Assessments	\$170
Tax Year	2018

**Additional Features:**

**Improvements** : Unimproved Streets **Land Inclusions** : Survey, Platted, For Sale Sign **Lot Description** : Irregular Lot, Tree Coverage - Light, Tree Coverage - Medium **Topography** : Level **Pasture Acres** : 0.000 **On Site Utilities** : None

**Driving Directions:**

From Hwy 71/34 in Park Rapids go E on Hwy 34 to left on Central (County 1) follow to right on Farmland Dr. to right on Fieldview Trail, property is second on right.



Listed By:  
RE/MAX First Choice

Affinity Real Estate Inc. participates in the Regional Multiple Listing Service of Minnesota, Inc Broker Reciprocity (sm) program, allowing us to display other broker's listings on our website. All properties are subject to prior sale, change or withdrawal.



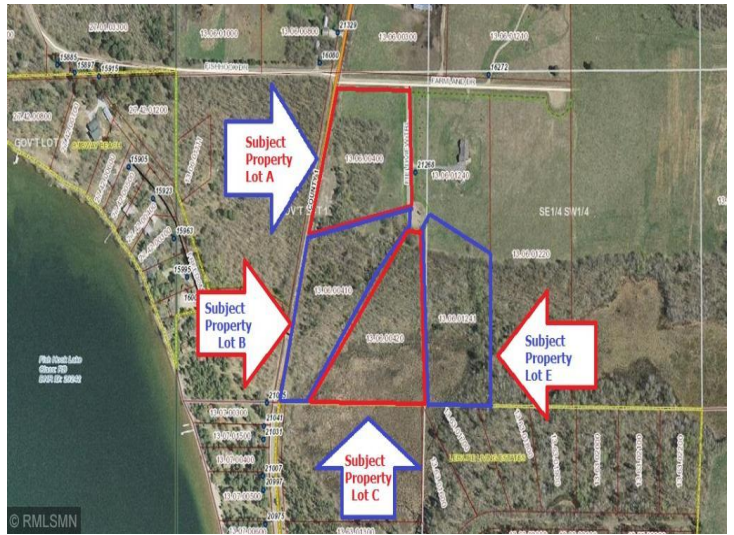
Call Affinity Real Estate

**218-237-3333**

[info@affinityrealestate.com](mailto:info@affinityrealestate.com)



Affinity Real Estate - 600 Park Avenue South - Park Rapids MN 56470



website: [www.AffinityRealEstate.com](http://www.AffinityRealEstate.com) | email: [info@affinityrealestate.com](mailto:info@affinityrealestate.com) | office: 218-237-3333 | fax:218-237-3377



**\$29,900**  
MLS 5134355 Land  
0 Fieldview Trail  
Park Rapids MN 56470