



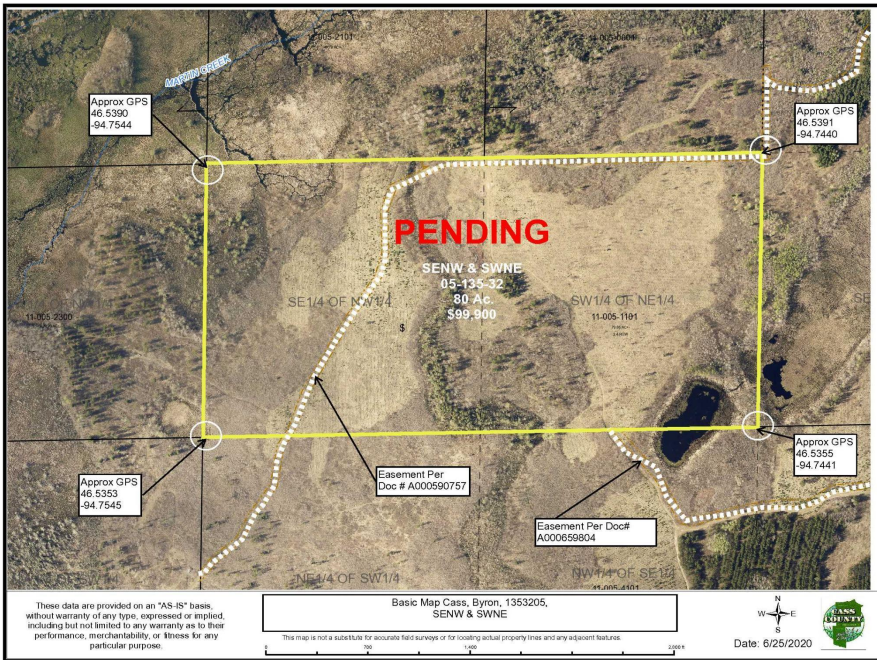
MLS 5617321 Land

\$99,900

80.00 acres
Raw Land

0 Tbd 87th Avenue Sw
Staples MN 56479

(Pending)



Description:

Enjoy plenty of privacy on this 80-acre hunting and recreational site with a 10 year old red pine plantation and 16 to 75 year-old aspen. This property is in a good hunting area for deer, turkey, and waterfowl. Property is close to nearby Dry Sand Lake and Farnham Lake WMAs for additional outdoor enjoyment. Wahoo Valley is just minutes away for dining and beverages.

Additional Details:

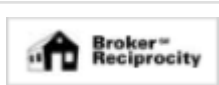
Lot Acres	80.000
Topography	Rolling,Hilly,High Ground,Low Land
Development Status	Raw Land
School District	2170 - Staples-Motley
Taxes	\$732
Taxes with Assessments	\$732
Tax Year	2020

Additional Features:

Improvements : None **Land Inclusions** : Easements **Lot Description** : Tree Coverage - Heavy, Tree Coverage - Medium, Tree Coverage - Light **Topography** : Rolling, Hilly, High Ground, Low Land **Pasture Acres** : 0.000 **On Site Utilities** : None

Driving Directions:

At intersect of State Hwy 210 & State Hwy 64 in Motley, go N on #64 15.5 mi Turn left (W) on 72nd St SW for 2.1 mi Turn left (W) on 72nd St SW for 2.1 mi Turn left (S) on 87th Ave SW & go 0.6 mi to esmnt access on right (W). Continue 0.3 mi W'ly, then 0.1 mi NW'ly to tract entrance. See map



Listed By:
Close-Converse Commercial Prop

Affinity Real Estate Inc. participates in the Regional Multiple Listing Service of Minnesota, Inc Broker Reciprocity (sm) program, allowing us to display other broker's listings on our website. All properties are subject to prior sale, change or withdrawal.



Call Affinity Real Estate

218-237-3333

info@affinityrealestate.com



Affinity Real Estate - 600 Park Avenue South - Park Rapids MN 56470